

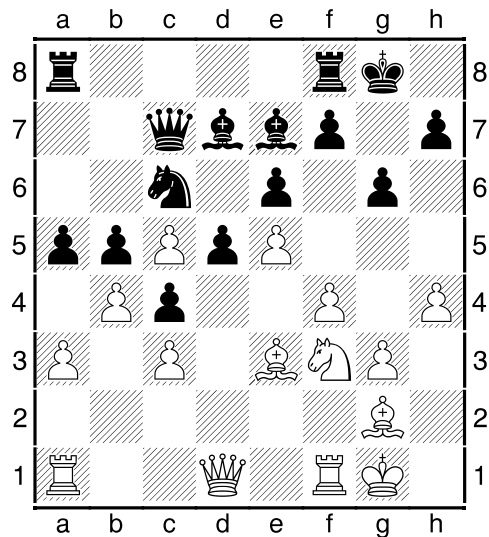
(1) Attack – lesson 1

02.04.2020

[Abishek]

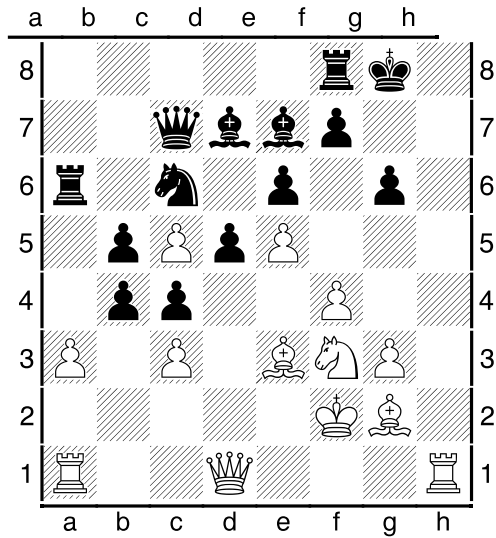
[[#]]

1.h5 [You can see both sides are castled kingside, but still white is launching a pawn attack, because the Queen on c7, Knight on c6, the rook on a8 these all are misplaced, it is on the otherside of the board, where they cannot come to the defense side of black king. But it looks like only h5 pawn is attacking black's king, not like all the white pieces are falling on the black kingside. So, the white pieces are also doesn't look like they are attacking. But these moves they are preparing the attack, doing the groundwork.]



1...Ra6 2.hxg6 hxg6 3.Kf2 axb4 [I should suggest you to take 5mins time, when we are seeing important games to improve our chess, we don't be hurry. You have to analyze and learn how to analyze. Make a list of moves in your mind, try to see some variations. These lessons will only effective, when you analyze and learn, you have to put some efforts to finding the best moves.]

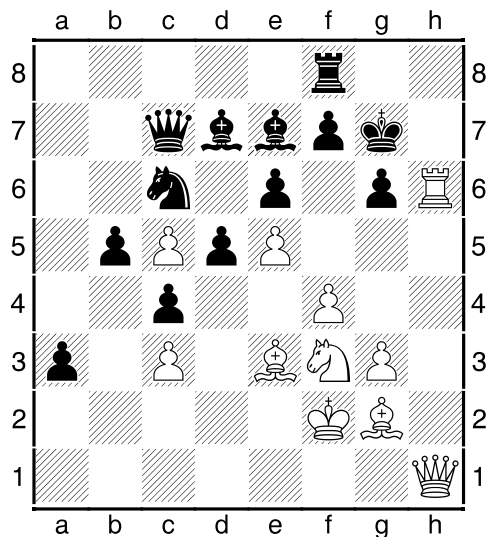
4.Rh1 f6 [In the game he played f6.]



[4...Rxa3 5.Rxa3 bxa3 6.Rh6 Kg7 7.Qh1 Rg8 Now how white will win from here. 8.f5 if black play exf5, how white will continue? 8...gxf5 (8...exf5 9.Rh7+ Kf8 10.Rh8 idea Qh6+ or Bh6+ followed by Rxc8. And it will get mated soon and white is winning.) 9.Rh7+ Kf8 10.Rh8 Again Qh6+ or Bh6+ is winning for white.]

5.Rh6 fxe5 [Now find the continuation.. Their are two possible continuation.]

6.Rxc8 [6.Ng5 What is the idea behind this move? Not allowing the king to go to f7. Idea is Rxc8+ , Kh8 , Qh1#. 6...Bxc5 7.Rxc8+ Kf7 Now what to do? 8.Qh5 Bf6 Now find the continuation. 9.Rxf6+ Removing the defenders of opponent king. 9...Kxf6 10.Qh4+ Kf7 11.Bf3 Idea Bh5+. We are one rook down. 11...Be8 12.Qh7+ Kf6 13.Qxc7]



6...Kf7 [Now how can white launch an attack?]

7.Ng5+ Kxg6 8.Qg4 [Now white can play Nxe6 and Nxc7 winning the queen atleast, if black is saving the mate.]

1-0